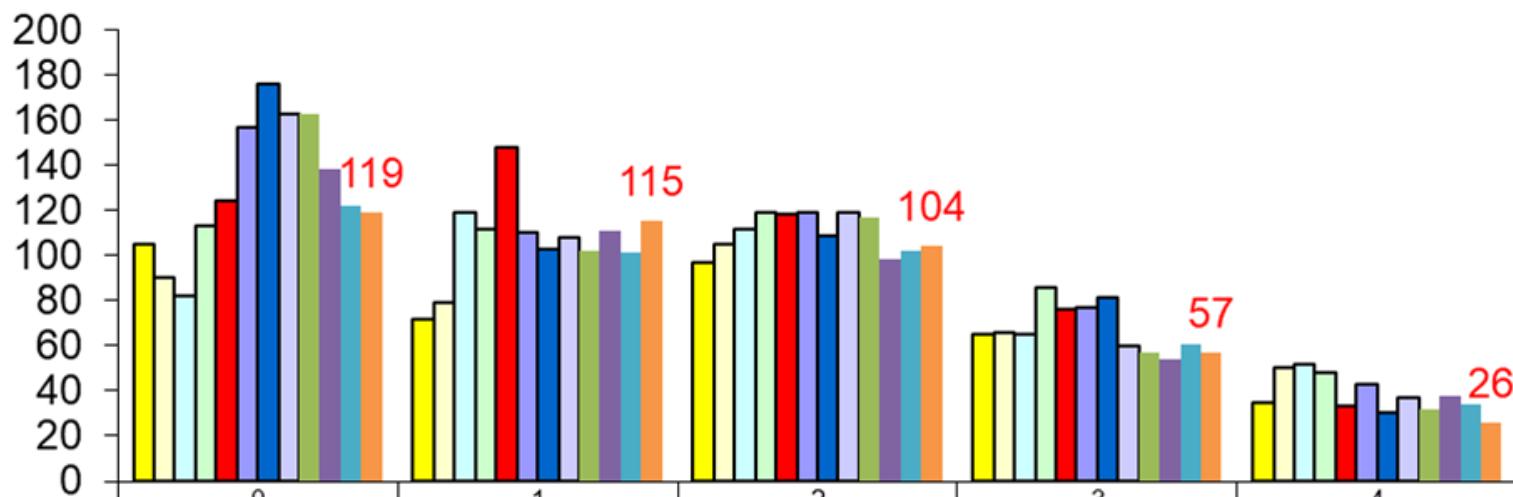


SOCI RAGGRUPPATI PER DONAZIONE



	0	1	2	3	4
■ 2007	105	72	97	65	35
■ 2008	90	79	105	66	50
■ 2009	82	119	112	65	52
■ 2010	113	112	119	86	48
■ 2011	124	148	118	76	33
■ 2012	157	110	119	77	43
■ 2013	176	103	109	81	30
■ 2014	163	108	119	60	37
■ 2015	163	102	117	57	32
■ 2016	138	111	98	54	38
■ 2017	122	101	102	61	34
■ 2018	119	115	104	57	26